



The United Methodist Committee on

Deaf and Hard-of-Hearing Ministries

Basic Facts on Hearing Loss

Statistics

- About 20 percent of Americans, 48 million, report some degree of hearing loss.
- At age 65, one out of three people has a hearing loss.
- 60 percent of the people with hearing loss are either in the work force or in educational settings.
- While people in the workplace with the mildest hearing losses show little or no drop in income compared to their normal hearing peers, as the hearing loss increases, so does the reduction in compensation.
- About 2-3 of every 1,000 children in the United States are born with a detectable hearing loss in one or both ears.
- Almost 15% of school-age children (ages 6-19) have some degree of hearing loss.

Statistics sources: [Johns Hopkins Medicine](#)

Other sources: [National Information Center on Deafness and Other Communication Disorders](#), [National Institutes of Health](#), [National Council on Aging](#), [Centers for Disease Control and Prevention \(CDC\)](#), and the [MarkeTrak VIII Study](#) by Sergei Kochkin, Ph.D.

For more information, go to the Hearing Loss of America website at www.hearingloss.org or to the United Methodist Committee on Deaf and Hard of Hearing Ministries website at www.umdeaf.org.

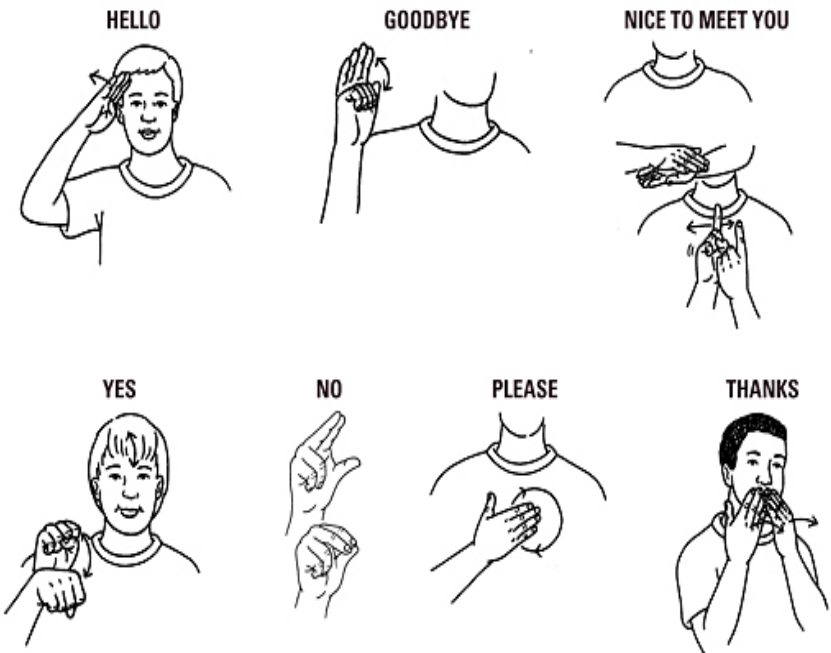


The United Methodist Committee on

Deaf and Hard-of-Hearing Ministries

Introduction to Sign Language

American Sign Language (ASL) is the preferred language for the Deaf community. Like spoken languages, sign language is not universal, but is often distinguished by country and even has nuances by region or area. It is an expressive, beautifully complex language that includes visual, gestural, and spatial components. Below are a few signs to learn and get you started.



Source: <https://thesharespace.wordpress.com/2013/03/14/sign-with-me-quick-and-easy-signs/>

For more information, go to the United Methodist Committee on Deaf and Hard of Hearing Ministries' website at www.umdeaf.org.